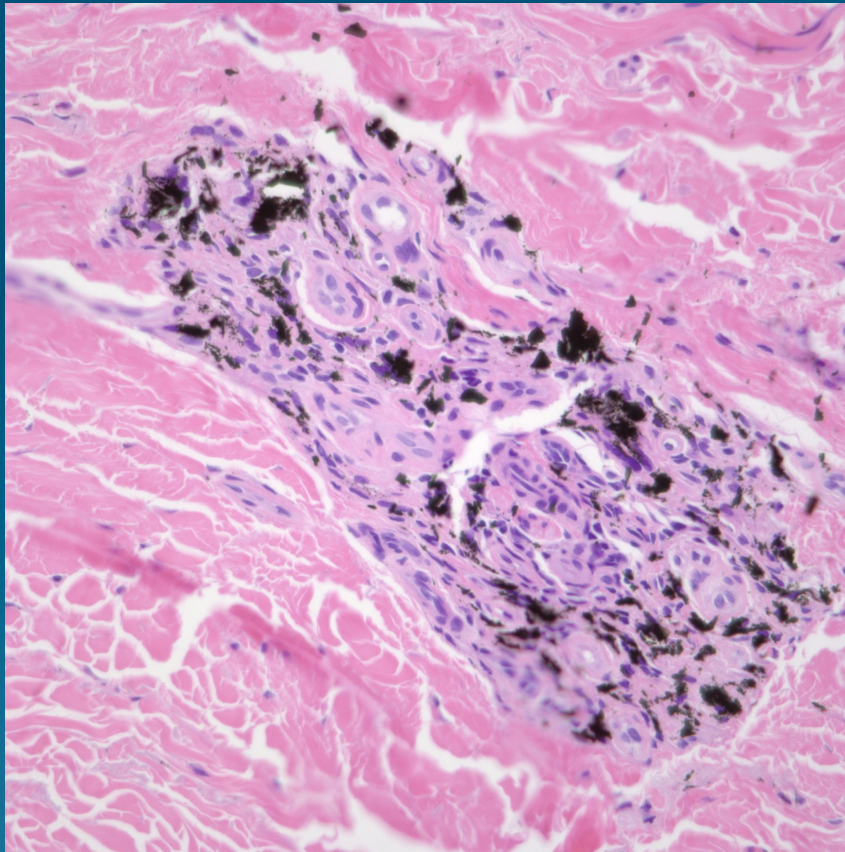
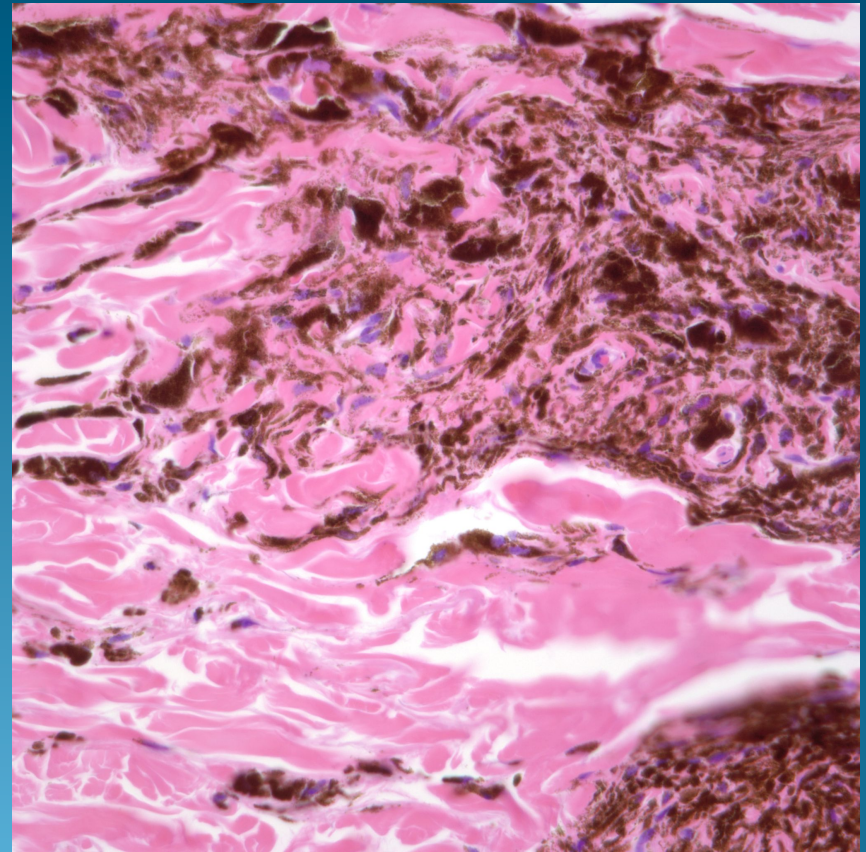


Which is the Tattoo or Blue Nevus?

Tattoo



Blue Nevus



Pearls

Tattoo

Dark pigment, varying shades, usually non-refractile, usually finer size than melanin

May have foreign body reaction or scar from procedure

Blue Nevus

Dark pigment with brownish hue

May be admixed with epithelioid cells

Difficult cases may need IHC stains or Fontana-Masson